

Flocca Rain - Quick Setup Guide

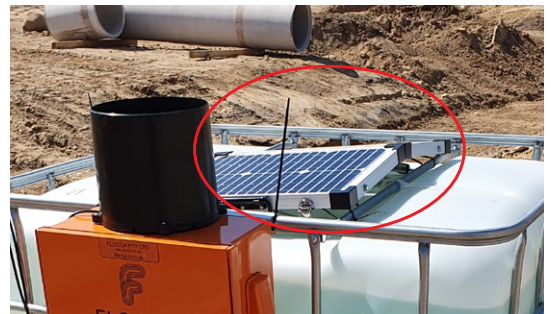
1. INSTALL FLOCCA CONTROLLER UNIT

- » Hang unit on the side of the IBC with the bracket provided
- » Open external door with key
- » Open internal door with key and remove battery isolation strip as per instruction sheet included
- » Close internal door



2. SOLAR PANEL

- » Set up the solar panel on top of the IBC
- » Face panel north
- » Ensure no shadow on panel as this can significantly effect the solar panel efficiency (do not put panel behind bucket)
- » Secure with zip ties to prevent it from moving
- » Attach cable to underside of Flocca unit



3. INSTALL OUTLET ASSEMBLY

- » Screw connector onto IBC
- » Attach rest of assembly to connector with the camlock clamp. Secure with pins. Keep solenoid valve and elbows upright
- » Open IBC valve
- » Attach solenoid cable to underside of Flocca unit
- » Attach flow meter cable to underside of Flocca unit



4. INSTALL TIPPING BUCKET

- » Set up tipping bucket on top of Flocca unit and glue down
- » Do not screw through Flocca box, this will void your warranty
- » Alternatively, mount on platform close to Flocca controller
- » Install the tipping bucket as close to horizontal as possible
- » Attach tipping bucket cable to underside of Flocca unit

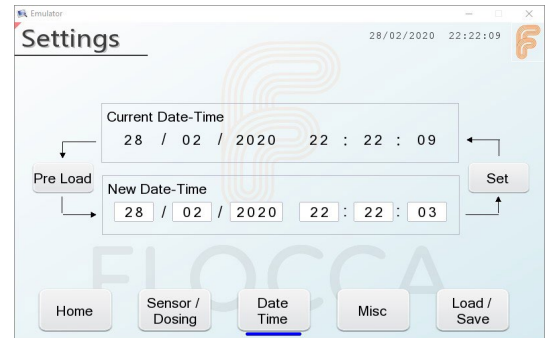


5. TURN ON FLOCCA

- » Open external door with key
- » Turn on controller with switch next to screen

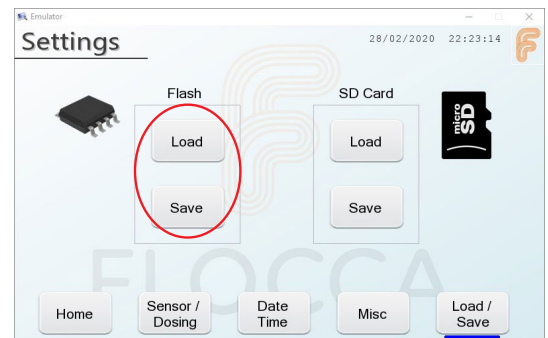
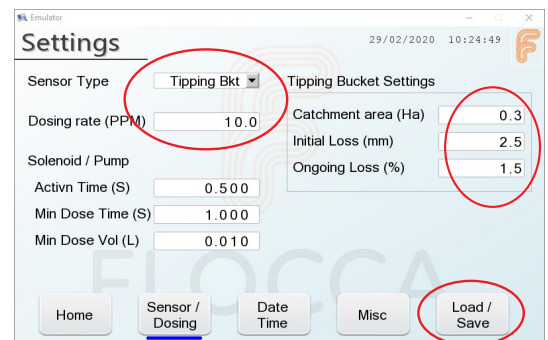
6. ENTER TIME AND DATE

- » From Main Screen, go to Settings > Date Time
- » Using the touch screen, enter New Date-Time and press Set
- » Press Home
- » It is important to enter date and time correctly so that data logs are accurate



7. ENTER SENSOR AND DOSING SETTINGS

- » From Main Screen, go to Settings
- » Sensor Type > using the dropdown, select Tipping Bucket
- » Dosing Rate (PPM) > enter value as specified by jar test or as advised by chemical supplier ⁽¹⁾
- » Catchment area (Ha) > enter site catchment draining to basin
- » Initial Loss (mm) > enter initial loss value ⁽²⁾
- » Ongoing Loss (%) > enter ongoing loss value ⁽³⁾
- » Press Load/Save – press Save under Flash (unless using SD card)
- » Press Home
- » Finished, your Flocca is now good to go



⁽¹⁾ Dosing Rate – if using ACH, this value is usually somewhere between 50 and 150

⁽²⁾ Initial loss – depth of rainfall required before runoff starts to basin. Typically between 0 and 20 mm depending on site conditions

⁽³⁾ Ongoing loss – percentage of rainfall not entering basin due to infiltration into the soil, following initial loss

If you wish to perform a test dose, refer below

8. MANUAL (TEST) DOSE

- » Place measuring jug (min. 1L at outlet hose)
- » From Main Screen, go to Manual/Calibrate
- » Dose Fixed Volume (L) – enter 0.5 L
- » Press Start
- » No need to press Stop, dosing will stop automatically
- » This first dose will fill any voids in the outlet assembly and hose
- » Return chemical to IBC and place measuring jug at outlet again
- » Dose Fixed Volume (L) – enter 0.5 L
- » Press Start
- » No need to press Stop, dosing will stop automatically
- » Check that volume in jar matches fixed volume, within 10%
- » Press Home
- » Finished, your Flocca is now good to go

